

## Version 11.5 Holiday Lighting Supplement

This patch updates Version 11.25 users and adds new Linkables, displays, and additional holiday lighting features. The following is a feature description for the updates in addition to the necessary instructions.

### ❖ New LED Linkables

- LED Candy Cane (LED-CCL-40)
- LED Snow Flake (LED-SFL-44W)
- LED Bow & Swag (LED-BG-22)
- LED Icicle (LED-IC-40)
- LED Christmas Stockings (LED-ST-40)
- LED Peppermint Sticks (LED-PS-40)
- LED Traditional (LED-II-40)
- LED Snowflake Blue (LED-SFL-44B)
- LED Icicle Blue (LED-IC-40B)
- LED Bow & Swag White (LED-BWS-22)

### ❖ New Dimension Linkable Tool

- This tool will calculate the number of Linkables required for covering any given area. This is accomplished by specifying the distance between any two points on the structure you are designing. Once you have input the distance between the two points, PRO Landscape will automatically calculate the number of Linkables required for any section you draw. The measurement is calculated based on the input distance. (See **Figure 1**)
  - **Note:** PRO Landscape will always round up to make sure you will not be short when determining the proper number of Linkable displays. For example, if the distance was measured at 14 feet 4 inches; that would give us a total of 172 inches. As each Linkable is a 44 inch section; we would require 3.9 sections of that Linkable to cover the distance. PRO Landscape will automatically calculate this as 4 sections of the Linkable required to cover the distance. (See **Figure 2**)
- To use this feature:
  - From the **Tools** menu, select **Dimension Linkables**
  - Your cursor will change giving you a crosshair to place on the first point you would like to indicate.
  - **Left-click** on the first point and **drag** the yellow chord to the end point. **Left-click** on the end point.



Figure 1

- The **Dimension Linkables** dialog box will appear.
- **Select** your measurement type (inches, feet, centimeters, or meters).
- In the box provided, **enter** the distance between the two points created.

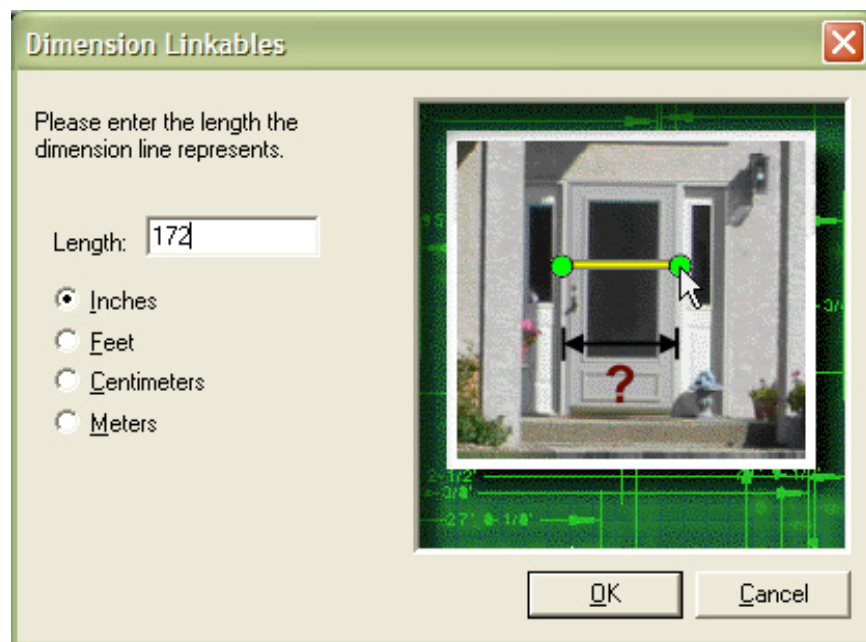


Figure 2

- Begin designing with the Linkables from the **Draw Holiday Linkable** button.  
**Note:** If you have not used the Dimension Linkable tool before you begin drawing the Linkables, PRO Landscape will pop up a box telling you that the Linkable dimension has not been set. You will be given the opportunity to set the Dimension Linkable tool at this point; or you may proceed without using the tool.
- Based on the information entered into the Dimension Linkable tool, PRO Landscape has now calculated the number of Linkable sections required to complete the design.

This information will be transferred to the bid once the drawing has been completed. Also, the information can be viewed by **right-clicking** on the Linkable chord and selecting **Properties**. Then, select the **Lighting tab** on the **Properties dialog box**. You will see the box called Linkable Sections; this box will indicate the number of Linkables required to cover that particular span. In addition, this information can be viewed on the **Lighting tab** of the **Workspace bar**. (See Figure 3)

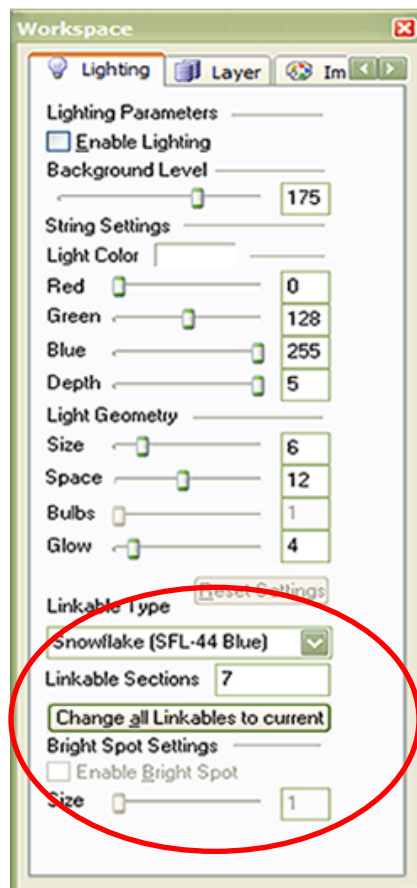


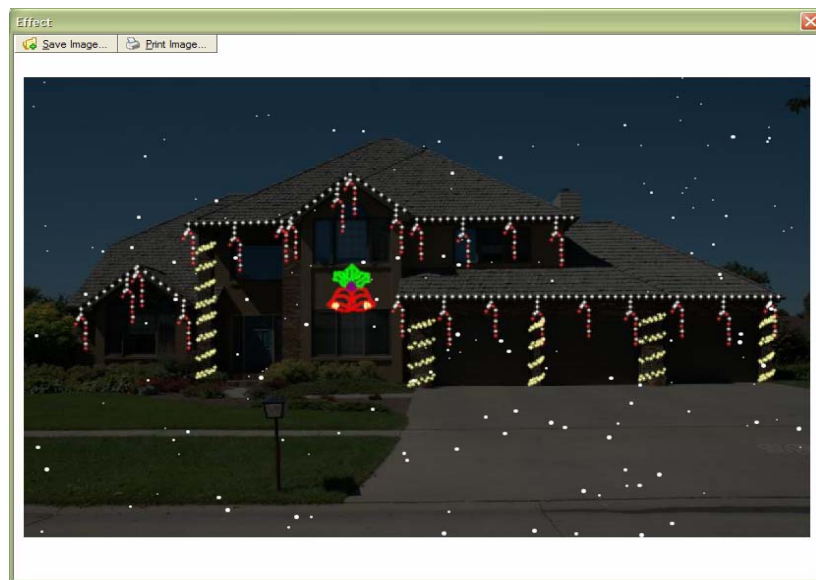
Figure 3

❖ New Holiday Displays

- 35 new Brite Ideas holiday displays

❖ Snow Effect

- New snow effect lets you create falling snow as a background for your design.
- To use this feature:
  - Once your design is completed; from the **Tools** menu, select **Effect>Snow**.
  - This will bring up a separate Effect window showing your drawing with snow in the background.
  - You also have the option to **Save** or **Print** the design (with the effect) from this location. (See **Figure 4**)



**Figure 4**

Save Display as LED

- This new feature allows you to save your newly created displays as LED lights.
- A **Save as LED** checkbox has been added to the **Display Light Editor**.
  - From the **Tools** menu, select **Display Light Editor**.
  - Notice the checkbox in the lower right hand corner. When your displays have been completed

If you have questions about the new features, please call PRO Landscape technical support at 816.421.6678