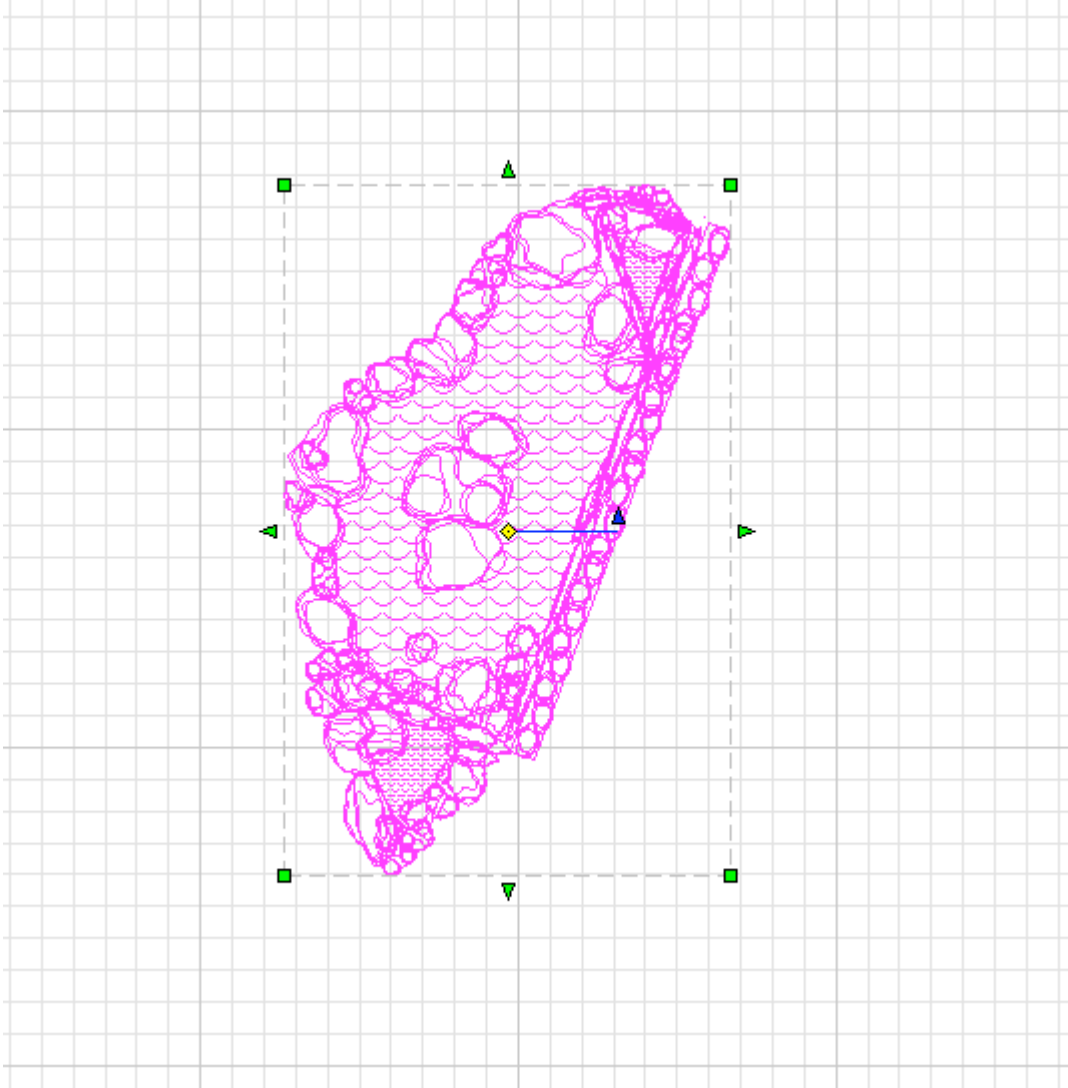
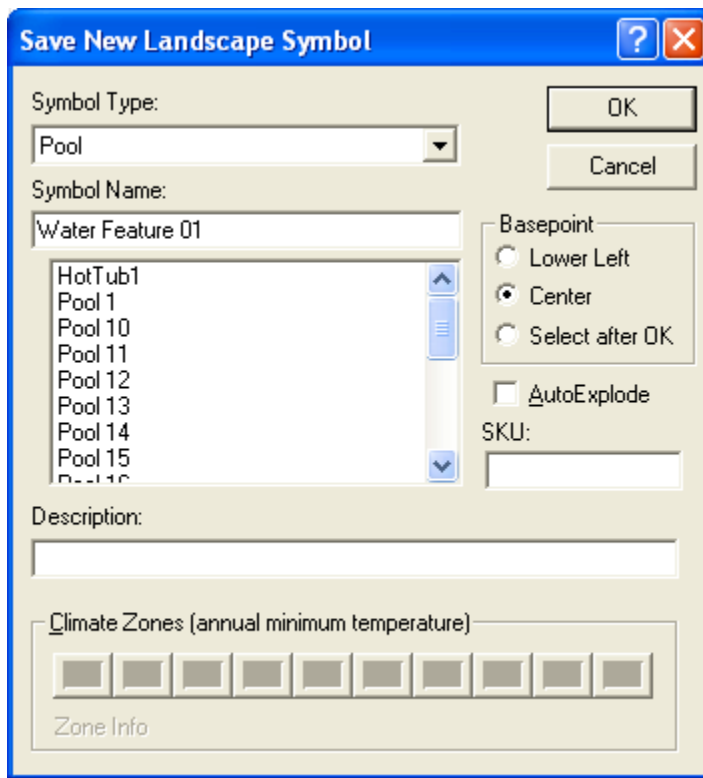


## Saving a water feature into the database.

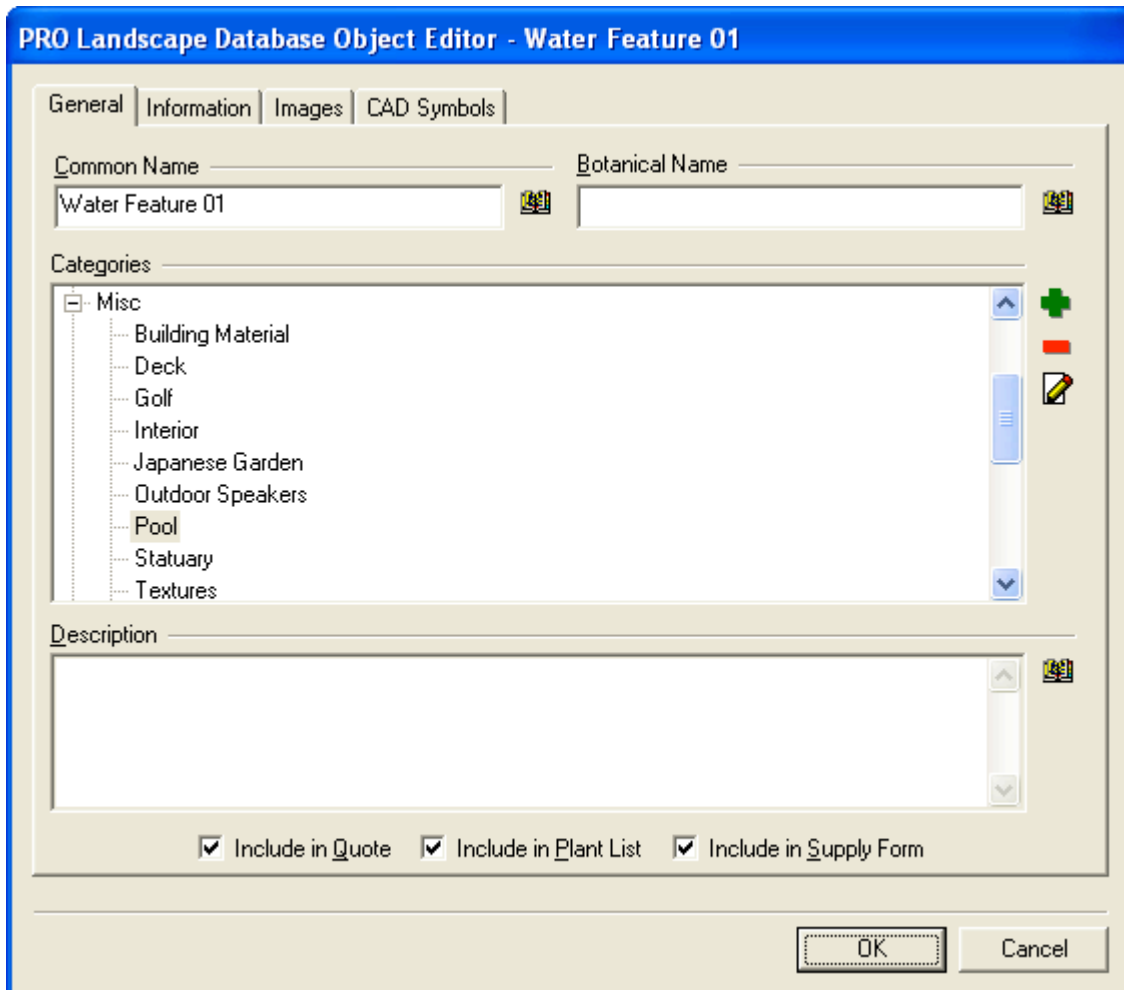
1. Download the Water Features.LNF file to your Desktop.
2. Double click on the Water Features.LNF icon on your desktop and Planner will open the water features file.
3. Click and drag over the preferred water feature so the entire water feature is selected.



4. Click on Draw > New Symbol.
5. Select Pool for Symbol Type.
6. Name the symbol, Water Feature 01 for example – click OK.



7. The Object Editor will display. You can add more information if you desire or just click OK.



8. The Object Price dialog displays.  
In Size/Type type 'each', hit Tab.
9. Fill in the price and any other information desired.
10. Pull down the Default Size menu and select Each then click Close.

**Object Prices**

Objects

Common Name	Botanical Name
Wall, Split Granite	Granite Wall
Wall, Steps	
Wall, Ties Pattern	
wall01	
Warmister Broom	Cytisus x praecox
Washington Hawthorn	Crataegus phaenopyrum
Water Feature 01	
Water Feature 1 inht	

Price Data

SKU	Inventory ID	Size/Type	List Price	Discount	Net Price	Cost	Delivery	Install	Guarantee	Labor	Supplier
		Each	0.00	0.00	0.00	0.00	0.00	0.00	0.00	0.00	

Default Size

Each

Close

Your water feature is now saved in the Pool library.

You can get to that library by Symbol Library icon then Miscellaneous > Pool.

